

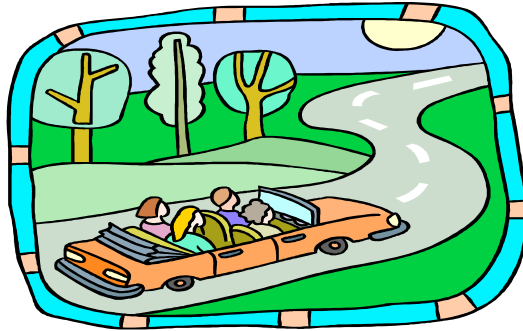
## EAP 1441 Writing Level IV/EAP 1401 Speech Level IV Quantitative Literacy Assignment (Group Project)

The Perez family is planning a four-day vacation to Orlando and needs to rent a car, reserve a hotel room, and purchase (buy) tickets to the theme park. They have saved \$1,000 for this trip.

1. For renting a car, they found the following rates (prices):

Car Rental	Daily Rate	Weekly Rate
Rental Company A	\$45, unlimited mileage	\$259, unlimited mileage
Rental Company B	\$38, plus 3 cents/mile	\$229, plus 3 cents/mile

In your group, discuss the different options and determine which car rental plan is the most economical (inexpensive). Show your calculations on the attached worksheet.



Write your choice in the box below and explain your decision in a few sentences.

2. For the hotel stay, they found the following rates:

Hotel Rates	Per Room	Per Suite
Hotel A	\$89 - one double bed no extra beds available	\$170 - one double bed and two twin (single) beds
Hotel B	\$135- one double bed \$13 - each extra bed	No suites available

In your group, discuss the different options and determine which hotel is the most economical. Show your calculations on the attached worksheet.



Write your choice in the box below and explain your decision in a few sentences.

--



4. Use the table below to add up all the expenses that you have calculated so far.

Car Rental	
Hotel Room	
Theme Park Tickets	
<b>Total</b>	\$

5. Bonus question:

How should the Perez family spend the remaining money? Discuss with your group and write your final answer in the space below.



--